

# **Tumble Tramp Assembly Instructions & Double Mini Instructions**

**\*\*WARNING – THE TUMBLE TRAMP AND DOUBLE MINI MAY CAUSE CATASTROPHIC INJURY INCLUDING PARALYSIS AND DEATH. DO NOT USE WITHOUT PROPER TRAINING AND PROPER SUPERVISION\*\***

**The assembly process for the Tumble Tramp and Double Mini is the same other than the bungee connection.**



**Start by laying out your legs**



**Put the tops on the legs starting and then the tops with the middle leg.**



**If you are connecting two or more sections of Tumble Tramp you will need to use the H-clip to connect the two together.**



**Once you have all the sections connected, insert the bolts into the nuts and tighten with a wrench.**

**\*\*\*DO NOT ATTEMPT TO ATTACH SPRINGS UNTIL ALL BOLTS ARE TIGHTENED!\*\*\***



**Lay out bed with the yellow stripes on the top.**



**Place a quick link on each corner of the Tumble Tramp. There is a total of 4 quick links.**



**Each corner of the bed has 4 D-Rings. Start by attaching one spring per corner working from corner to corner in a circular motion. Attach the spring on the first D-ring and the first triangle on the frame. This first triangle will also have the quick link attached to it. Once the first springs are in place, go to the second D-ring and attach it to the third triangle on the frame. (You will skip a triangle on the frame)**

**\*\*HINT: Use one of the springs to help pull the other springs from the bed to the frame.\*\***





**You will skip a spot on the frame for each D-ring spring. Continue to work in the circular motion until the first 4 D-ring springs have been attached on all four corners.**



**Once you have attached the four springs per corner, you will have to go back and attach a second spring per D-ring. Each D-ring will have two springs attached to it. Attach the second spring to the spot on the frame that you skipped during the initial spring installation.**

***\*\*\*Note – You will only use two springs per bed bar on the Double Mini\*\*\****

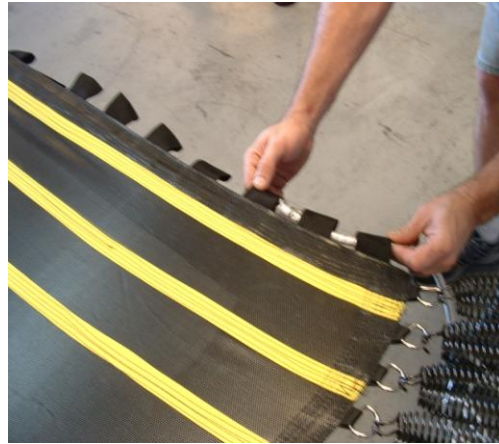
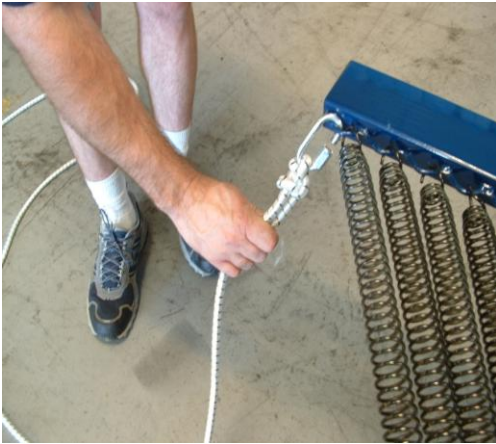


Once there are eight springs attached per corner you can start to attach the remaining springs. Find the middle of the bed and connect a spring. Do this on both sides. Once the middle springs are connected connect two springs to the right and two springs to the left of the center spring. Skip a triangle on the frame and then connect 10 springs. Do this on both sides, in each direction. If you need to skip a triangle sooner in order to keep the springs straight, go ahead and do it. The goal is to keep the bed tight and no wrinkles in it. If a wrinkle starts to occur, remove some of the springs and angle them a little toward the end of the tramp. This will remove the wrinkle or move it towards the end. Follow this process to the end of the tramp. When you finish, there may be a wrinkle at the end. Once you install the bungee and the twine the wrinkle will disappear.

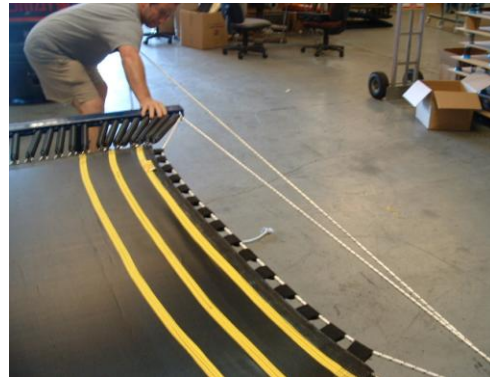


The bed will be very tight once the springs have been installed.

**This Tumble Tramp bungee is installed differently than the Double Mini. Please see the [last page](#) for Double Mini bungee instructions.**

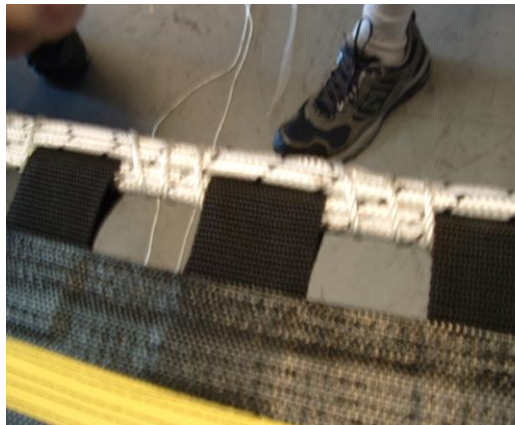


**Once installation of the bed is complete, you can proceed to the bungee cord step. Tie the bungee in a knot around one of the corner quick links. Run the cord through the ends of the bed and through the quick link on the opposite corner.**

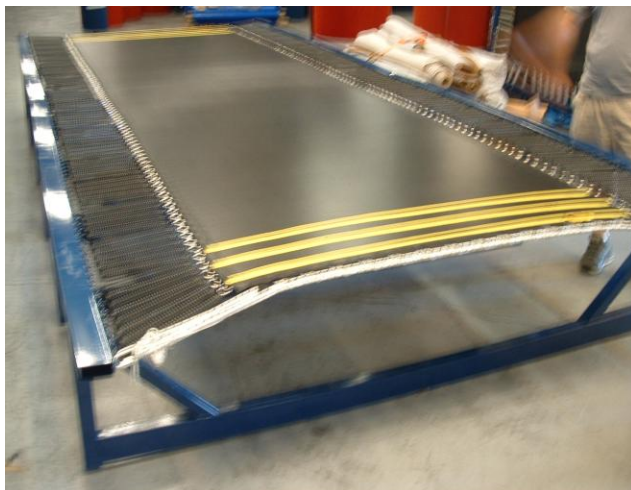


**Run the cord across to the beginning quick link once again, pulling the cord as tight as possible, then back across to the opposite quick link. From there thread it through the bed once again. Once the cord has been threaded through the bed webbing twice, run it back and forth between the quick links until all cord has been used and then tie off.**





**Attach the twine to the quick link and start to wrap it around the cord bringing the two sections of the cord together.**



**At this point your Tumble Tramp is almost complete.**



**Attach the Velcro along the length of the frame. Your pads will attach to the Velcro and secure them in place.**

**This completes your Tumble Tramp assembly.**

**\*\*\*SEE NEXT PAGE FOR DOUBLE MINI BUNGEE INSTRUCTIONS\*\*\***



## DOUBLE MINI BUNGEE INSTRUCTIONS

Unlike the Tumble Tramp, the bungee cord on the Double Mini does NOT go through the loops of the double mini bed. The bungee is stretched back and forth as many times as possible as well as tight as possible. Once the bungee has been installed it is time to use the twine to bring the bed and bungee together. This keeps tension on the end of the bed. – *NOTE: You are to use only two springs per bed bar.*

